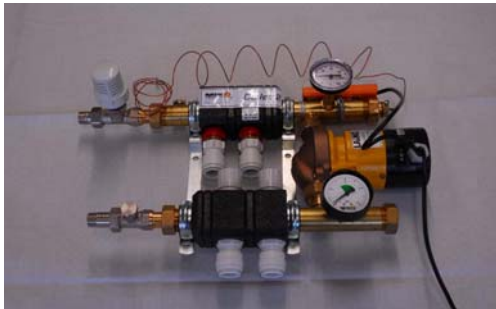
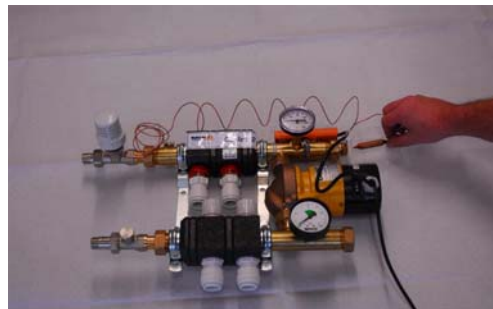


DoJet - Remodelling

Guideline for changing thermostat and sensor



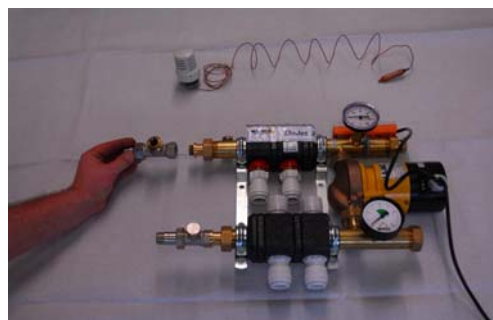
Initial situation



Step 1: Remove old sensor



Step 2: Loosen the knurled screw and remove thermostat



Step 3: remove thermostatic valve and old flange socket



Step 4: remove entire immersion sleeve



Step 5: Order of new unit



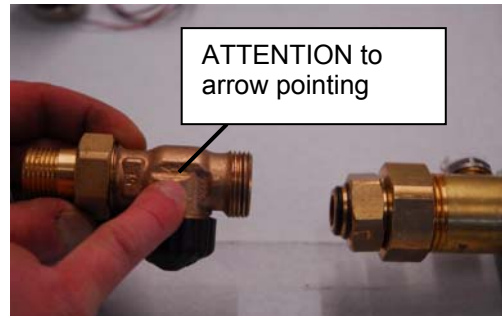
Step 6: Assemble new unit
ATTEND TO ORDER!



Step 7: insert immersion sleeve – opening aligned with wall – and refasten



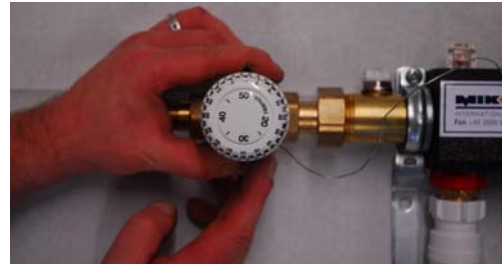
Step 8: Assemble new flange socket with seal



Step 9: Assemble new thermostatic valve orographically



Step 10: Insert sensor in immersion sleeve. DO NOT bend or flex sensor tube!



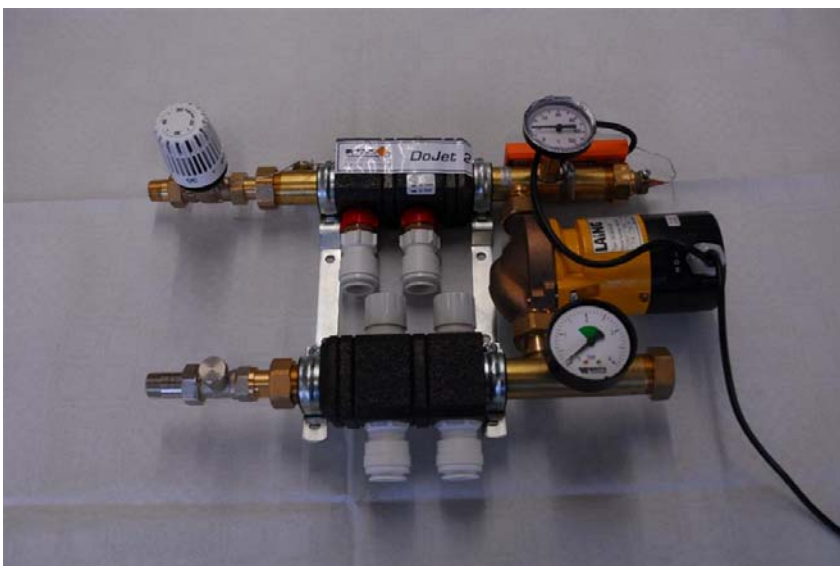
Step 11: Put thermostat in **50°C-position and refasten**



Step 12: Carefully put sensor tube in order and fasten with plastic clip...



Step 13: ...with attention to soldered joint between tube and sensor (strainless fitting)



You're done!